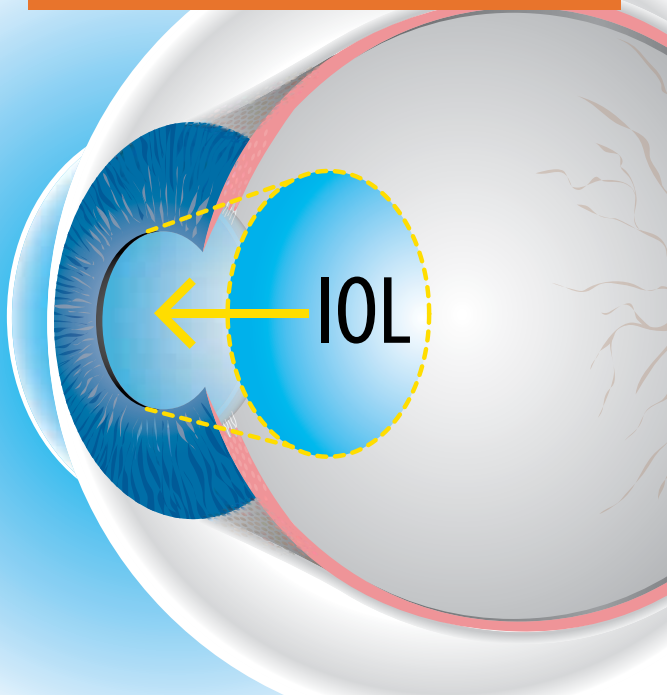


# Implantable Contact Lenses

Implantable Contact Lenses (ICL) also known as Phakic inter-ocular lenses (IOLs) can correct a wide range of vision errors by permanently inserting an IOL (much like a contact lens) in front of the natural lens of the eye. This new technique is similar to cataract surgery, but the natural lens remains in place so the eye's natural focusing ability is preserved. An implantable contact lens is beneficial because it becomes a permanent fixture of the eye, avoiding time consuming maintenance. They also do not get lost, or have to be replaced like glasses and contact lenses. ICL procedures are being used on severely nearsighted patients who may not be candidates for the more common laser procedures such as LASIK, LASEK, and PRK. Unlike laser vision correction procedures that permanently change your vision, it is possible to later remove an ICL. Talk to your doctor to find out more about FDA approved ICLs.



## DENNIS MATZKIN, M.D. *Cataract and Refractive Surgeon*



Dennis Matzkin, M.D. graduated from the University of Witwatersrand Medical School in 1980. He completed his internship in medicine and surgery as well as ophthalmology at the Johannesburg Hospital. After completing two years national service as a medical officer in South Africa, he entered residency at the University of Cape Town, Groote Schuur Hospital. He was awarded the Fellowship in Ophthalmology by the college of medicine in South Africa.

After immigrating to the US in 1989, Dr Matzkin spent 5 years undergoing further ophthalmic training at the Albert Einstein College of Medicine, NY, where he was a fellow and surgical instructor in microsurgical eye surgery. He has published articles in peer review journals, and presented papers at national meetings.

Dr Matzkin began general ophthalmic practice in Atlanta in 1995. He established Eye1st Vision & Laser in 2000.

Dr Matzkin is certified by the American Board of Ophthalmology, member of the American Academy of Ophthalmology and the American Society of Cataract and Refractive Surgeons, American Medical Association and the Georgia Society of Ophthalmology.

He has treated such high profile patients as President Carter's three children, Captain Herb Emory "Eye-in-the-Sky", weather anchor Laura Huckabee, and the three-time world champion archer, Jessie Moorhead from the Outdoor TV Channel.

## GEORGE O. WARING, III, M.D. *Cataract and Refractive Surgeon*

Dr. Waring is an ophthalmic surgeon with 25 years of experience in vision correction surgery, RK LASIK, intraocular lens implants and cataract and corneal surgery.

He was born in Buffalo, New York, and received his MD degree from Baylor Medical College in Houston, TX. His ophthalmology training included a residency followed by a Heed Fellowship in corneal disease and surgery at the Wills Eye Hospital in Philadelphia.



Dr Waring began his academic career in 1974 at the University of California, Davis. In 1979 he joined the faculty at Emory University, where he has been a tenured Professor of Ophthalmology and Director of Refractive Surgery until 2004, when he entered private practice.

Dr. Waring is board certified by the American Board of Ophthalmology and is a Fellow of the American College of Surgeons (FACS) and of the Royal College of Ophthalmologists (FRCOphth, Britain). He is a member of approximately 50 ophthalmological societies, American Ophthalmological Society, American Academy of Ophthalmology, International Society of Refractive Surgery, and the International Intraocular Implant Club. To read more about Dr. Waring's numerous professional awards and accomplishments, please access his full bio at [www.GeorgeWaring.com](http://www.GeorgeWaring.com).



*Dunwoody Office*  
5505 Peachtree Dunwoody Road  
Suite 220  
Atlanta, GA 30342  
tel: 404.442.9577

*Duluth Office*  
10080 Medlock Bridge Road  
Duluth, GA 30097  
tel: 770.623.3931

[www.eyel1st.net](http://www.eyel1st.net)



[www.eyel1st.net](http://www.eyel1st.net)

# IMPLANTABLE Contact Lenses

## How Do ICLs work?

Similar to a contact lens, an ICL reacts with your natural eye to focus. The biggest difference between the two is an ICL is permanently placed in the front chamber of the eye and a contact lens can be inserted or removed at any time. The focusing power of the ICL can be determined so that it closely matches your eye's prescription. With an ICL, surgeons don't have to reshape the cornea. Instead, they make a small incision and inject a lens that can completely correct the vision problem. The clear, oblong implants are about the size of the tip of your pinky and are made of the same plastic used in replacement lenses for patients with cataracts. The lens fits inside the eye, just in front of the pupil. Because the natural lens of the eye is not removed, the patient retains the natural focusing capability of the eye for near focusing tasks.

## The Procedure

The implant surgery is quick and painless, lasting only about 20 minutes. You will arrive at the surgery center about an hour prior to your procedure. Once checked in, a sedative may be given as you are prepared for surgery. The area around your eyes will be cleaned and a sterile drape may be applied around your eye. Eye drops or a local anesthetic will be used to numb your eyes. When your eye is completely numb, an eyelid holder will be placed between your eyelids to keep you from blinking during the procedure.

The recovery time is short and the results of the surgery are almost immediate. Most patients resume normal activities within a day or two.

## Risk and Complications

Serious complications from ICLs are extremely rare, but like any surgical procedure, it does involve some risk. Besides infection, possible complications include inflammation, increased pressure in the eye and cataract formation. Early studies have shown that all of these are rare, and the plastic used to make the implants has a 50-year track record of safe use in the body.

## Am I A Candidate?

Visit our office for a complimentary vision consultation to find out if you can benefit from implantable contact lenses.

After a thorough eye exam, the doctor will let you know if you are a good candidate for this procedure. Good candidates for the ICL procedure:

- *want to reduce or eliminate the dependence of reading glasses or bifocals*
- *are extremely nearsighted*
- *have had a stable eye prescription for at least one year*
- *have no health issues affecting the eyes*
- *desire a procedure that may be reversible, unlike LASIK*
- *may not be a good candidate for laser vision correction*

EARLY PHAKIC IOL STUDIES FOUND THAT 92 PERCENT OF PATIENTS GAINED VISION OF 20/30 OR BETTER WITHIN A MONTH.

*Vision of 20/20 is considered excellent, while 20/40 is the cutoff for driving a car without wearing corrective lenses.*

